



CLOVERDALE

CLOVERDALE

An Anecdotal History Of
A Rural Neighborhood

Compiled by Harold Putnam
and Jane (McClure) Clark Brown

June, 2001

Our primary source for this presentation

Topics We Will Cover

- What is Cloverdale?
- 1804 Settlers
- Early Life, Infrastructure
- Two Weddings: 1886 and 1911
- Wayside Farm and Westview Farm

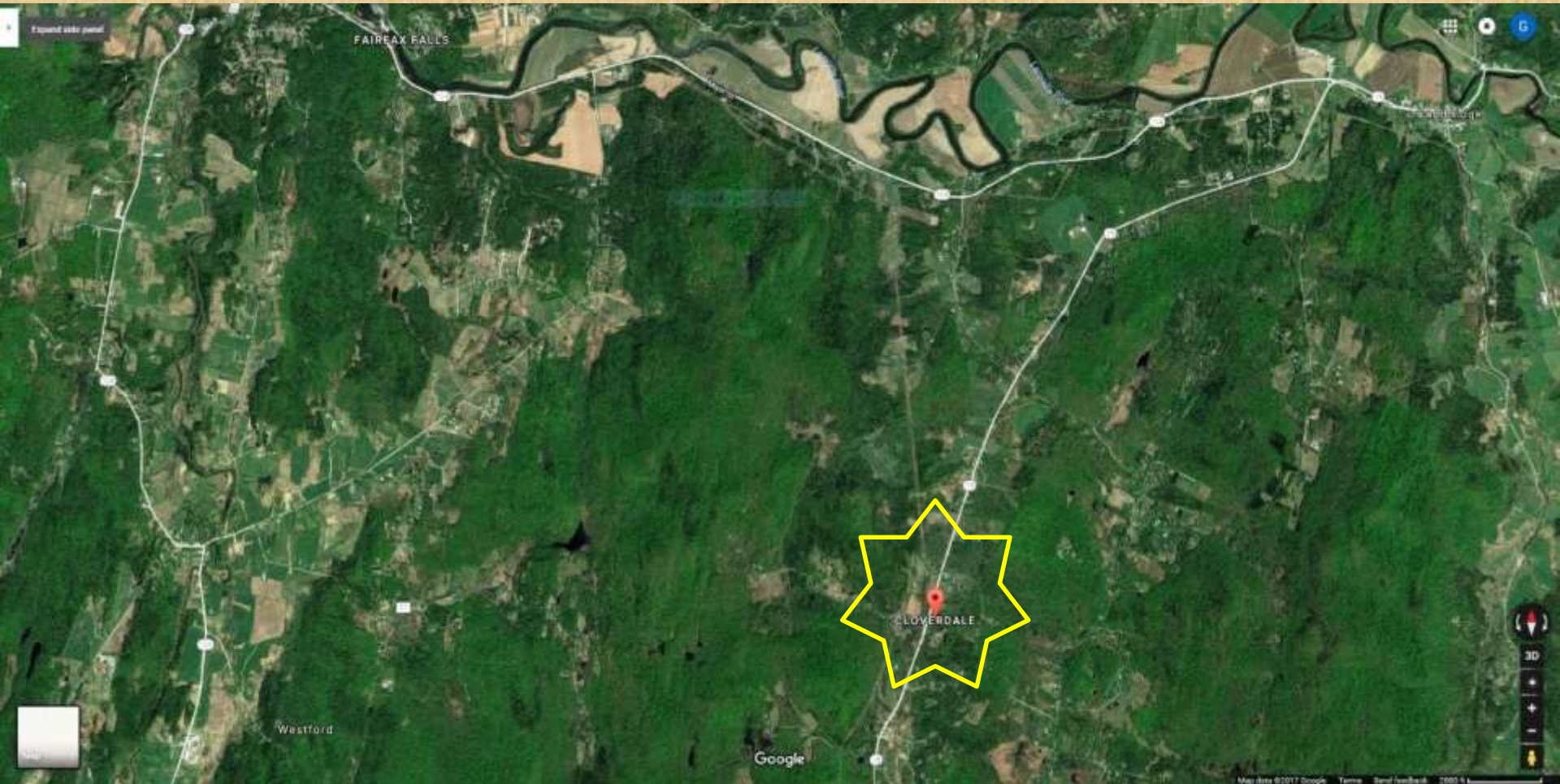
Presentation to the Westford Historical Society

By Beth Putnam Cole and George Putnam

July 17, 2017

What is Cloverdale?

Google Maps knows where Cloverdale is!



The “center” of Cloverdale is approximately the intersection of Seymour Road and Vermont Route 15



Intersection of VT Route 15 and Seymour Road,
next to K & R Automotive Repair, 2017

Cloverdale runs from the Putnam Farm...

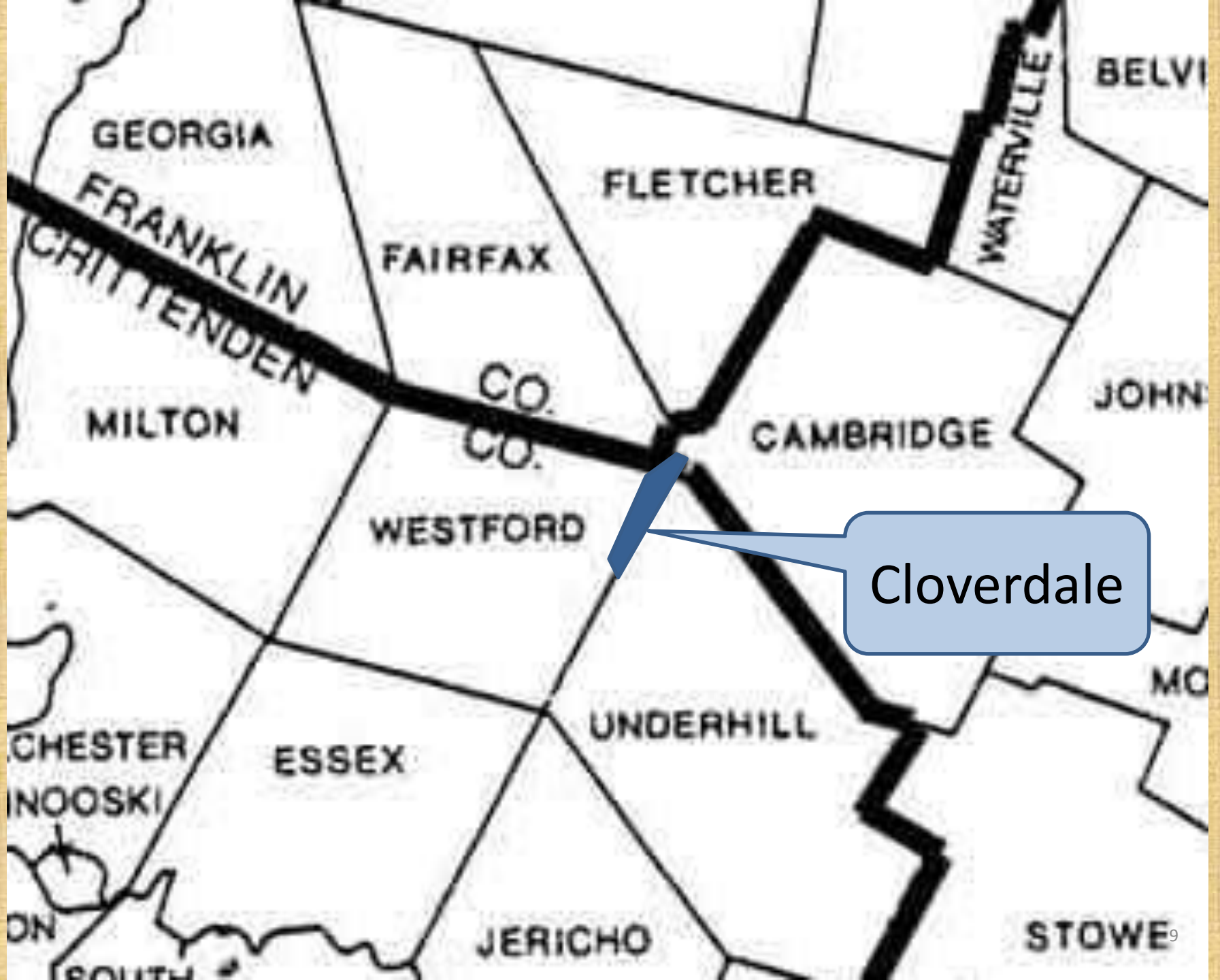


Photos taken 2017

...to the Cloverdale Farm



Photos taken 2017



Cloverdale

Scale 1 1/2 Inches to the Mile

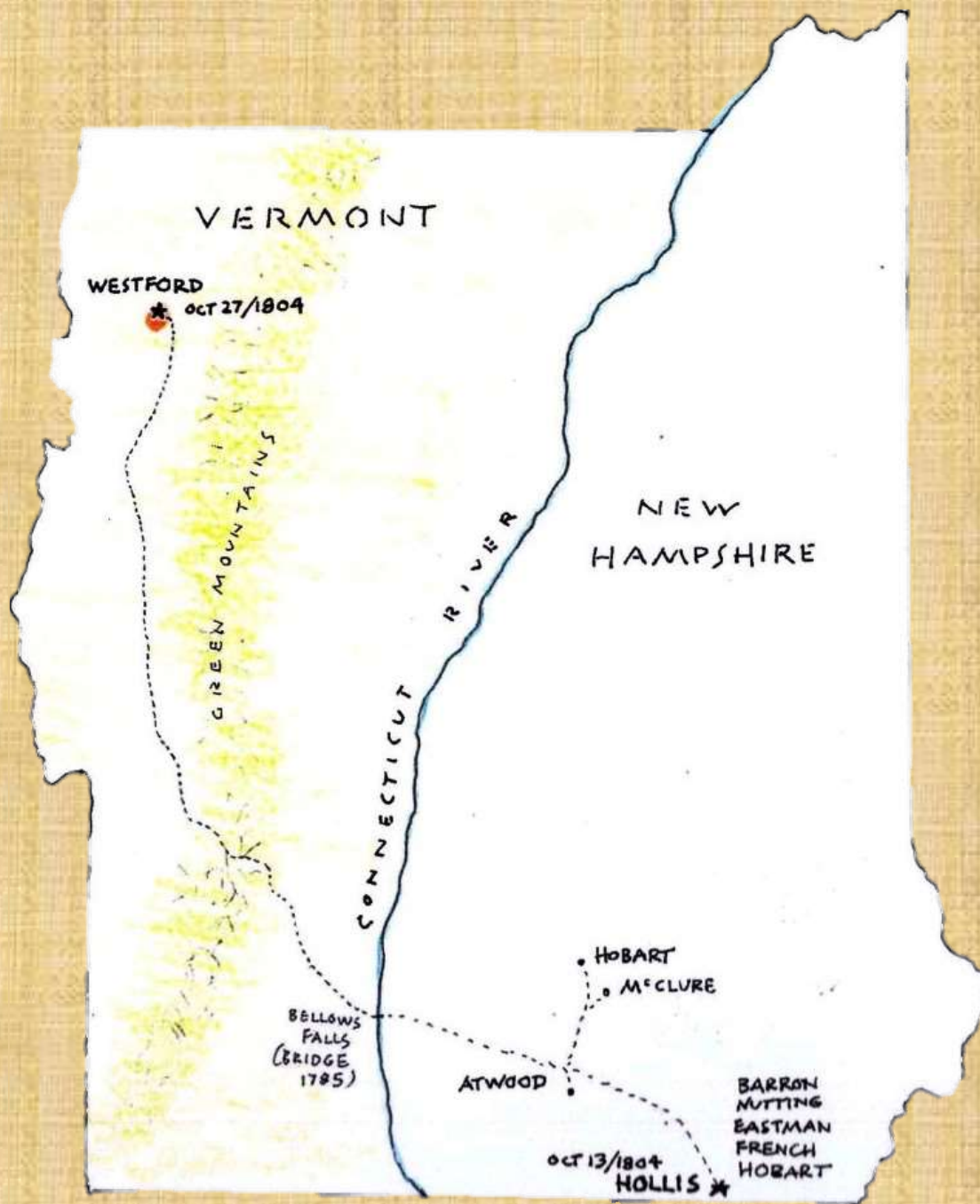
*Turn at Westford
Scale 45 Rods to the Inch*

[illegible]

F. W. Beers Atlas 1869

1804 Settlers

Possible route
in 1804 from
Hollis, NH to
Westford, VT



**THE MOST LIKELY MEMBERS OF THE MERRIMACK
VALLEY GROUP THAT MIGRATED TO WESTFORD,
VERMONT WITH THEIR NUMEROUS CHILDREN IN
OCTOBER, 1804***

Thomas and Ruth Atwood

Benjamin and Sarah Barron

Caleb and Dorcas Eastman

Jonathan and Mary French

Shebuel Hobart

Solomon and Nancy Hobart

Jonas and Sally Hobart

Isaac Hobart

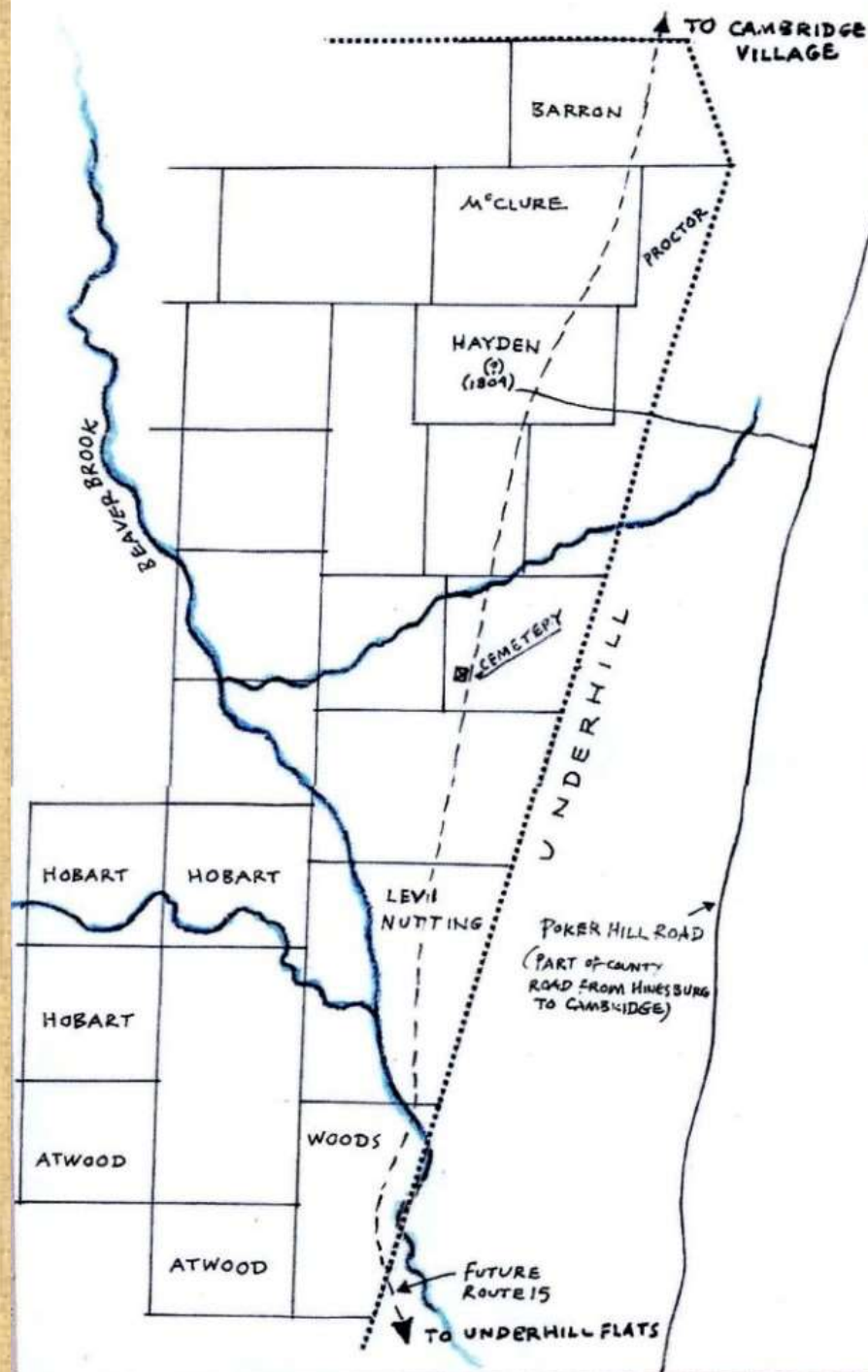
James and Deborah McClure

David Woods

Asa and Amy Proctor

Levi and Persis Nutting

** based on land records and family histories*



Land purchases by
the NH folk that
are recorded in
Westford archives



The Jordan House
Before its modern day restoration



Former Jordan House, 2017

The McClure House

Adjacent to the Cloverdale Cemetery





Former McClure House, 2017

Cloverdale Farm House (probably at the time it was owned by the Robinsons)

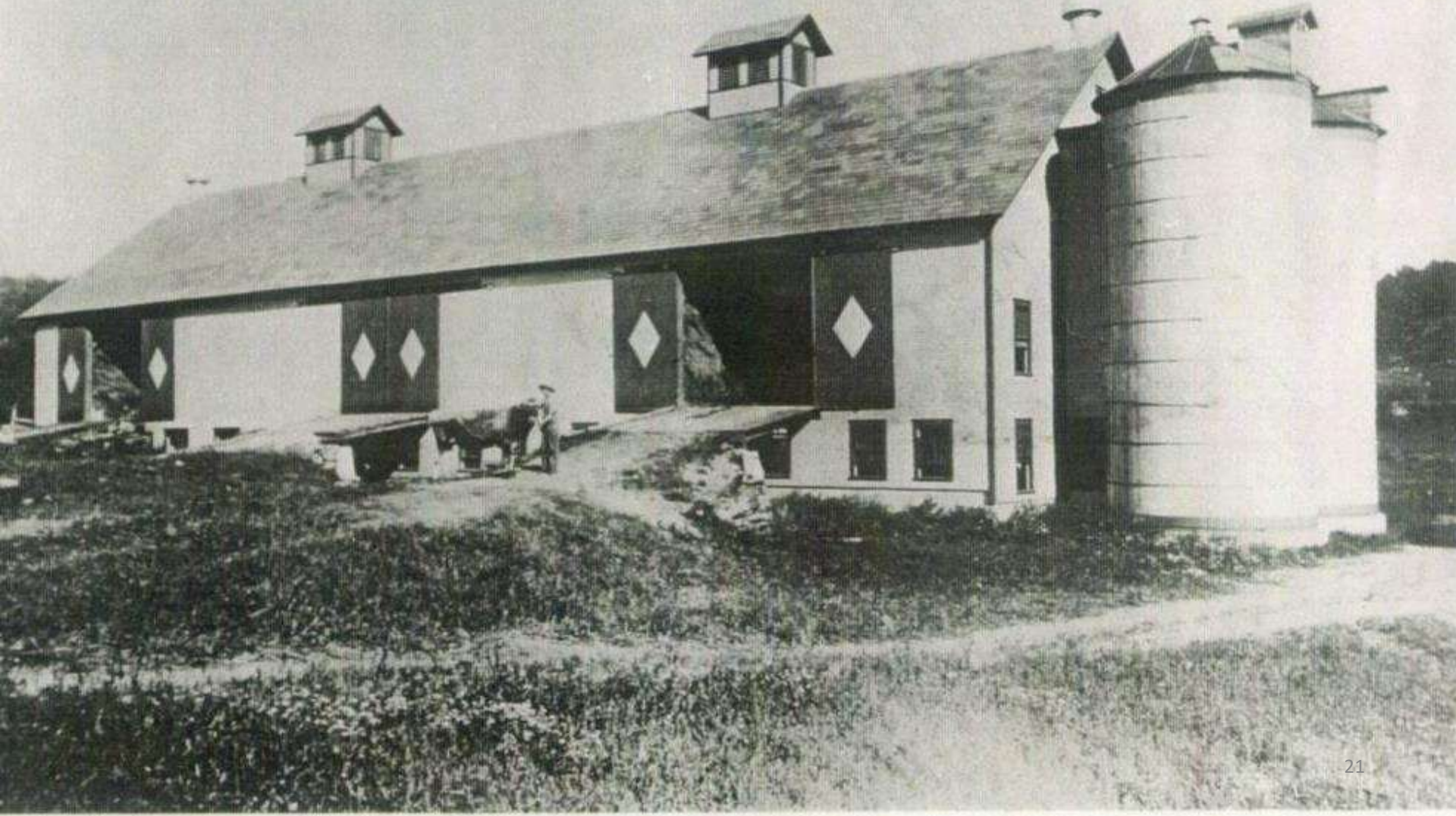




Site of Cloverdale Farm House, 2017

Cloverdale Farm

unknown date, perhaps
late 1800s or early 1900s



Cloverdale Farm c. 1990s





Cloverdale Farm, 2017



Hobart House, 2017



Jackson Place, 1987



Hayden/Leach House, 1996

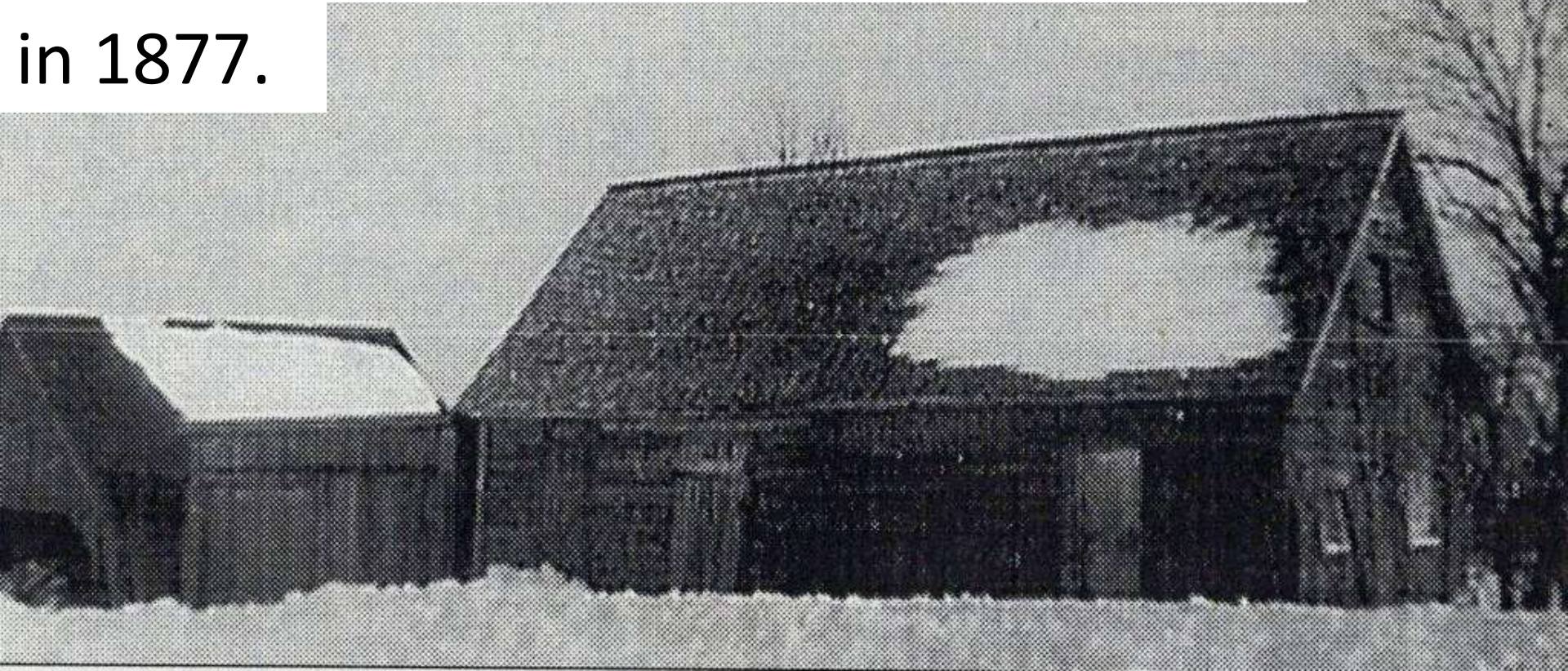


Former Allen Irish House, 2017



Allen Irish Barn, 1996

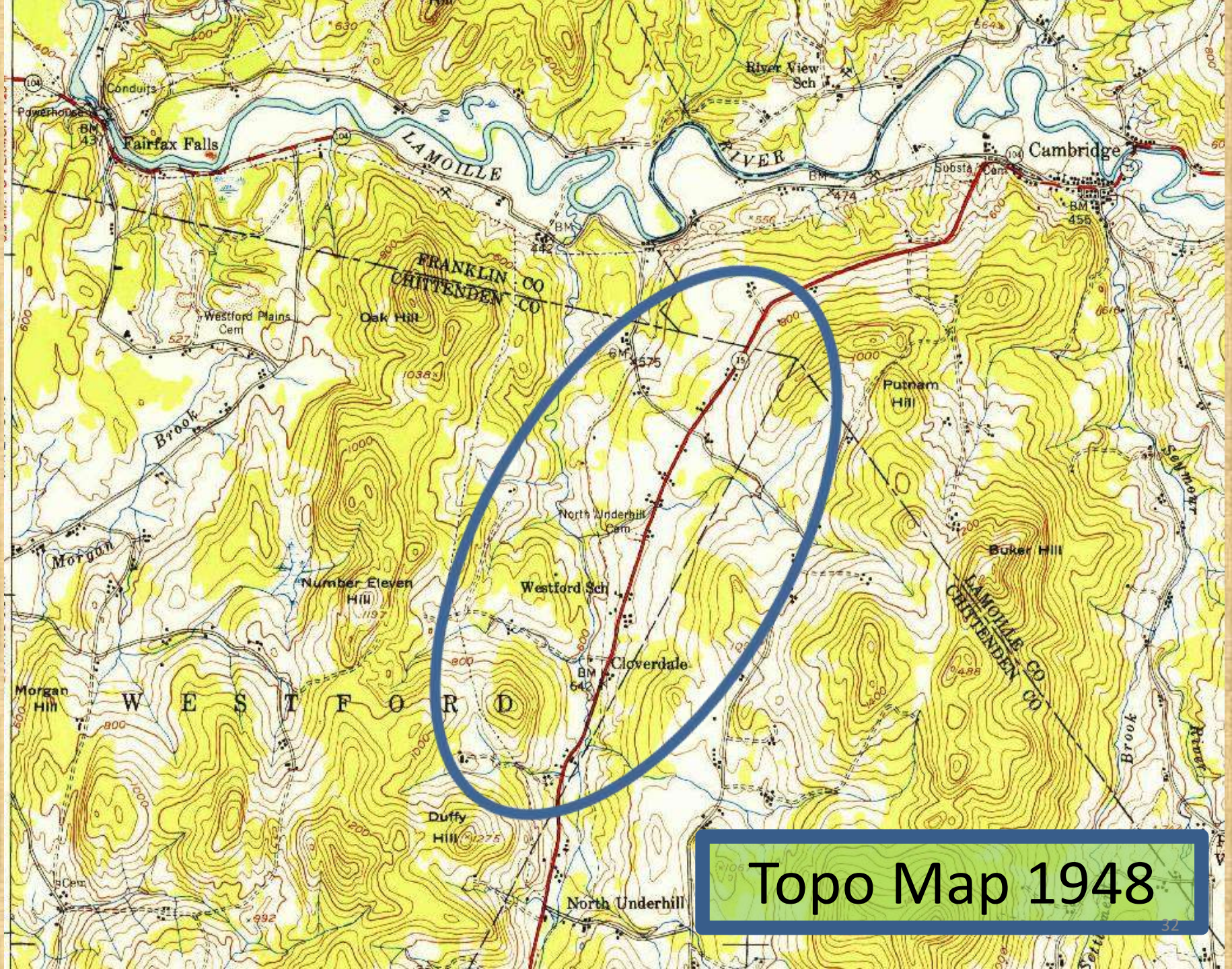
Old Barron house on the Putnam Farm.
Used as a bunkhouse for railroad men
in 1877.





2017

Early Life and Infrastructure



Topo Map 1948

Potash – America's First Industrial Chemical

A Digression Concerning Potash

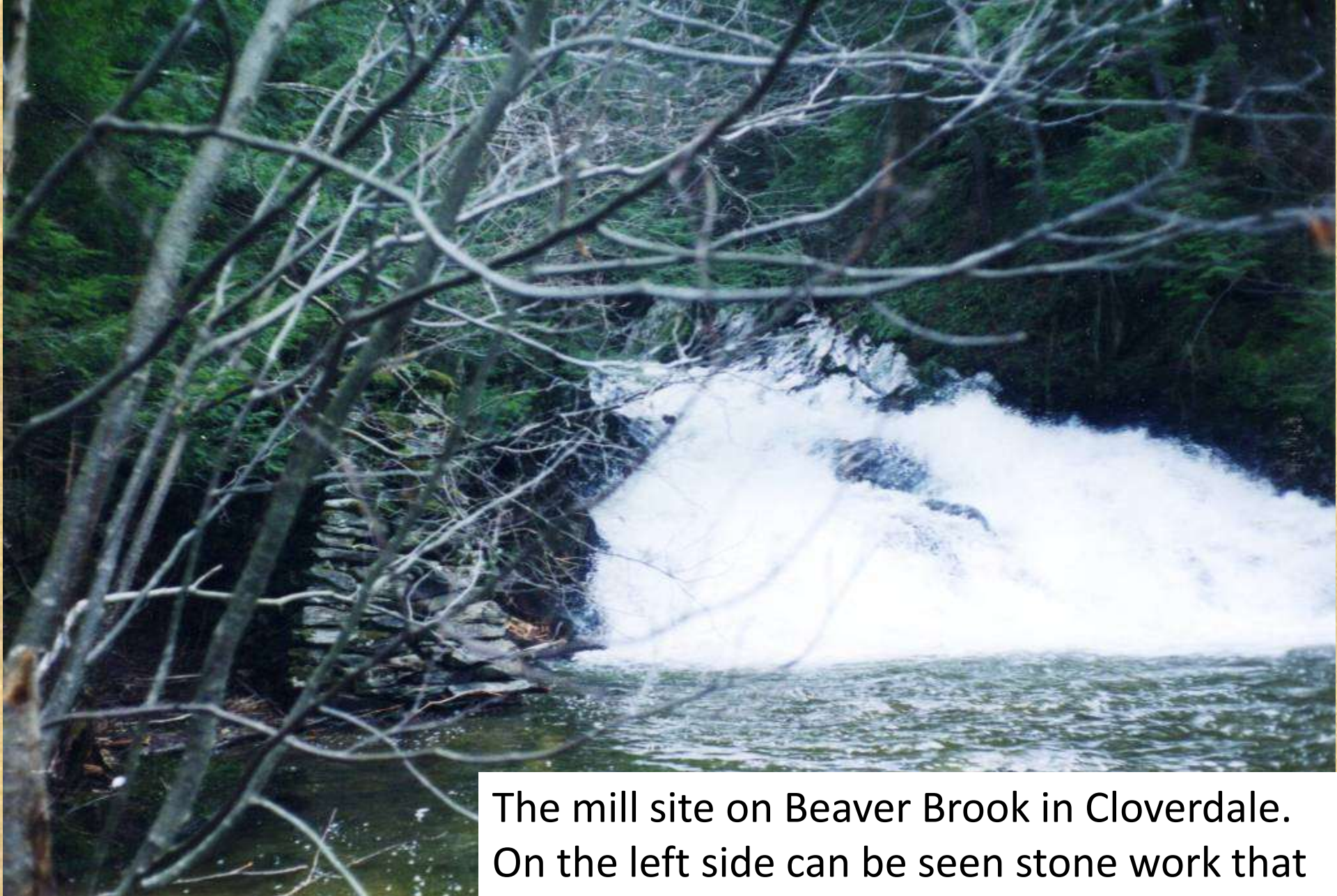


Potash kettles weighed as much as 500 pounds. A Jericho blacksmith made a potash kettle weighing over 700 pounds. Obviously a kettle so hefty probably was not brought from New Hampshire, and probably not hung from a pole.

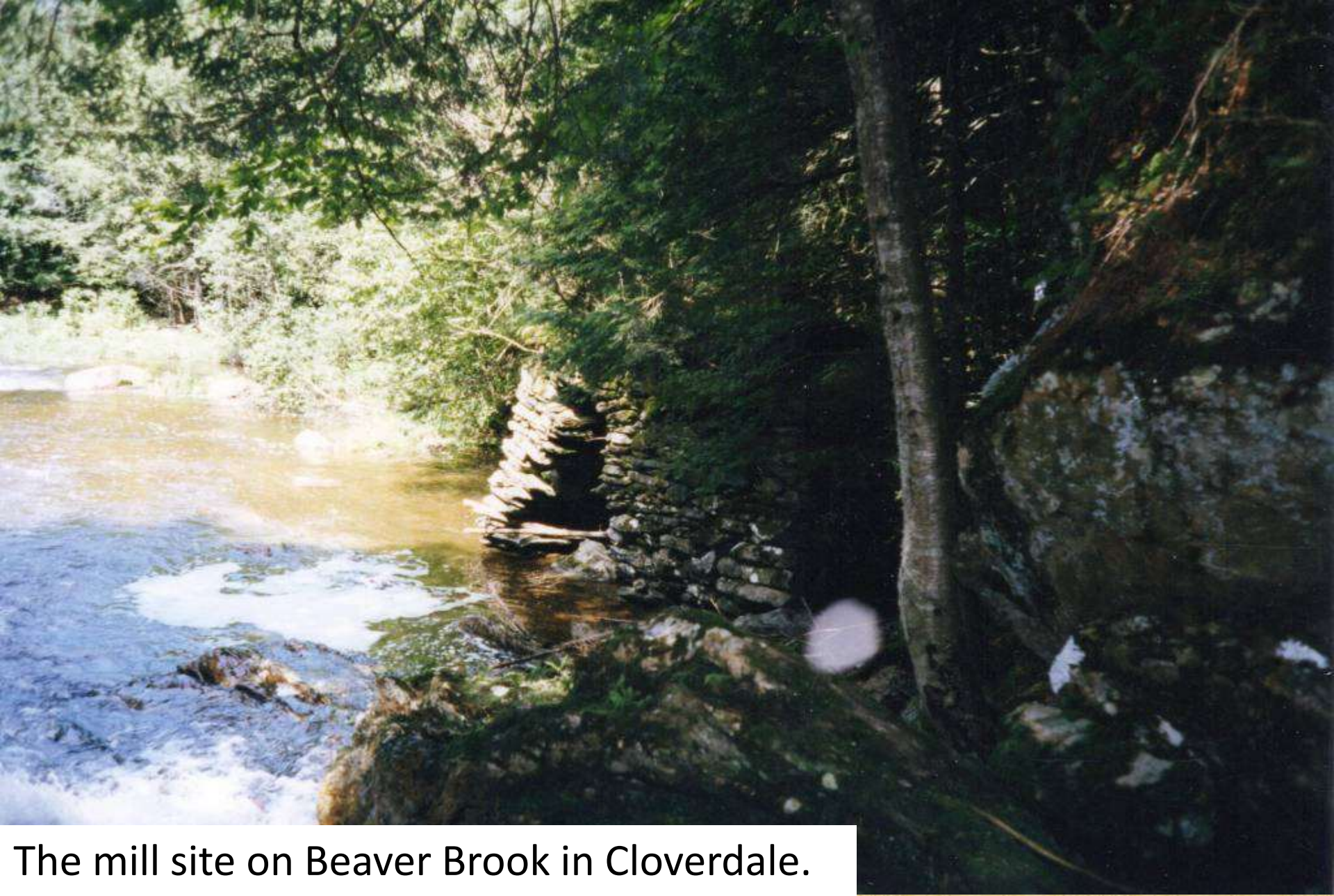
The estate of an Underhill man in 1810 listed the value of his potash kettle as \$5. (In that same list 27 sap buckets were valued at \$2.25.)

Potash kettles were also used for boiling maple sap, making soap, boiling the family wash and cooking swill for hogs.





The mill site on Beaver Brook in Cloverdale. On the left side can be seen stone work that once supported a mill wheel. Photo taken by Harold Putnam on April 27, 1996.



The mill site on Beaver Brook in Cloverdale. Stone work visible in the center. Photo taken by Harold Putnam on April 27, 1996.

Cloverdale School

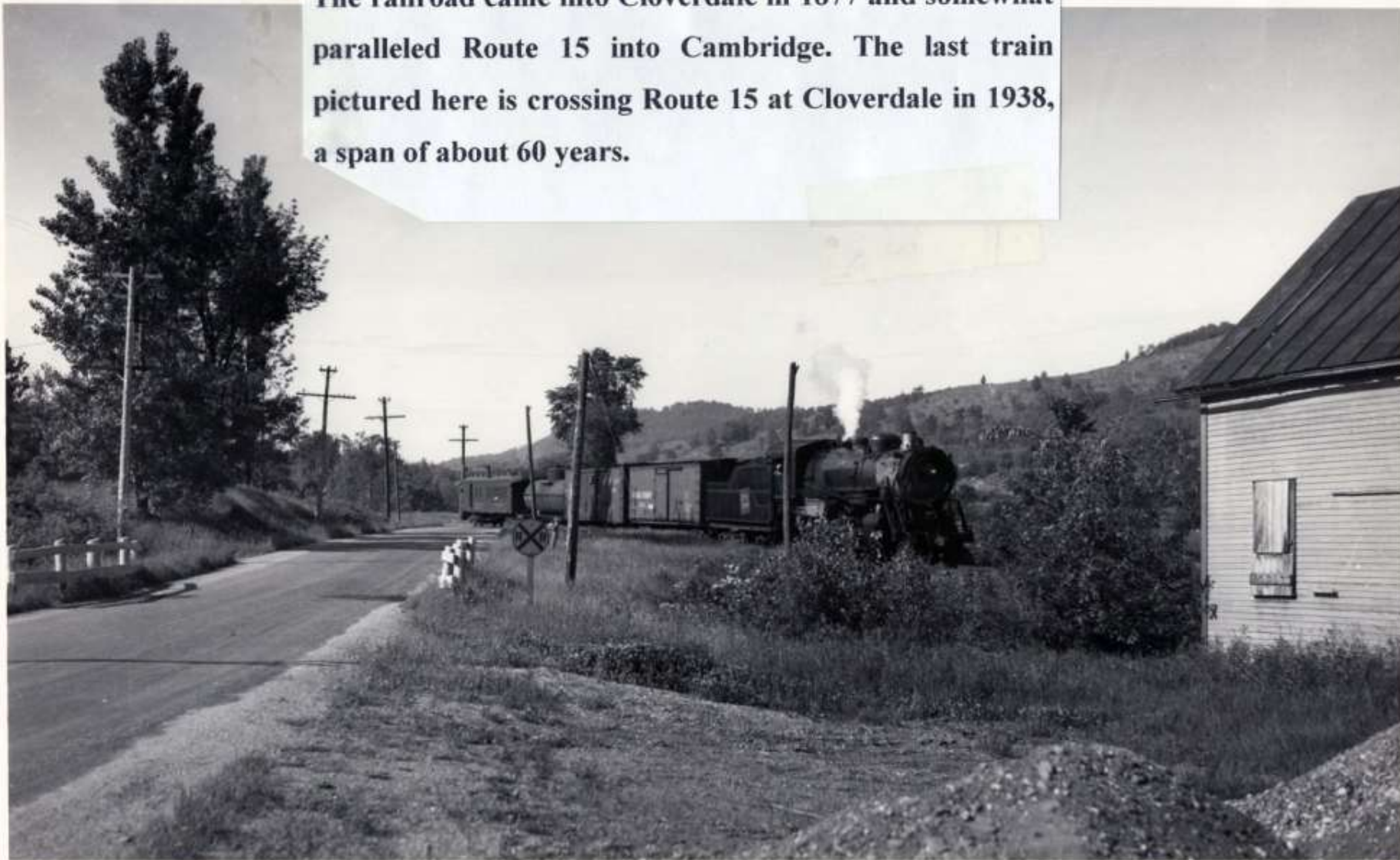


Sunday School



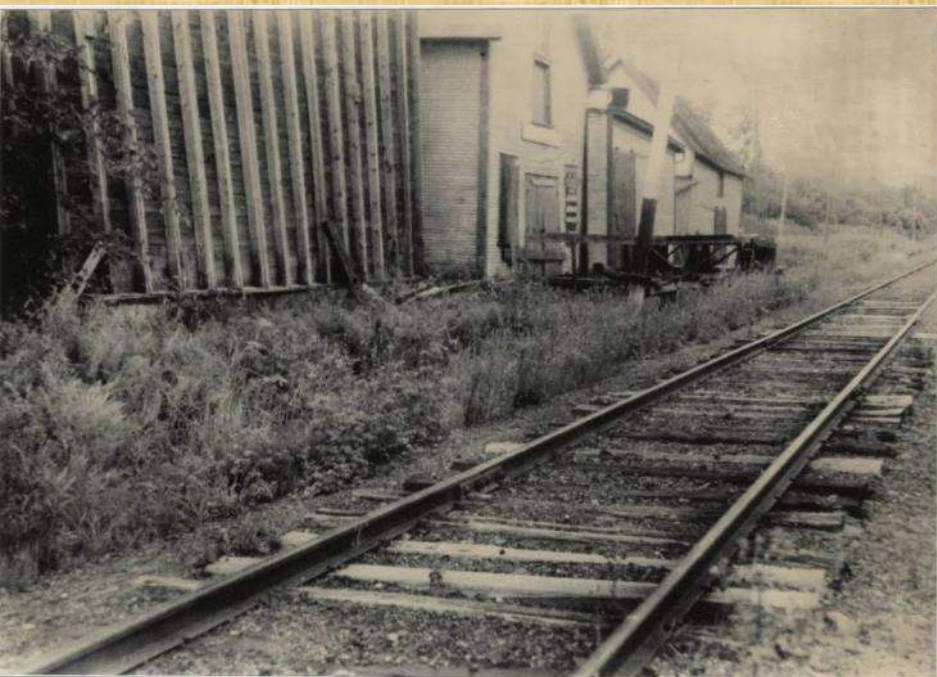
Irene Sinclair - Arthur Sawyer - Gladys Como - Harvey
Blenn Como - Mary Sawyer - Roy Sinclair

The railroad came into Cloverdale in 1877 and somewhat paralleled Route 15 into Cambridge. The last train pictured here is crossing Route 15 at Cloverdale in 1938, a span of about 60 years.



6-16-1938

Cloverdale Creamery





Cloverdale Creamery





K & R Automotive Repair, 2017
On the site of the former Cloverdale Creamery



House across from K & R Automotive Repair, 2017
Believed to have been the manager's residence for
the Cloverdale Creamery.

Former RR Track

School

Mill Site on
Beaver Brook

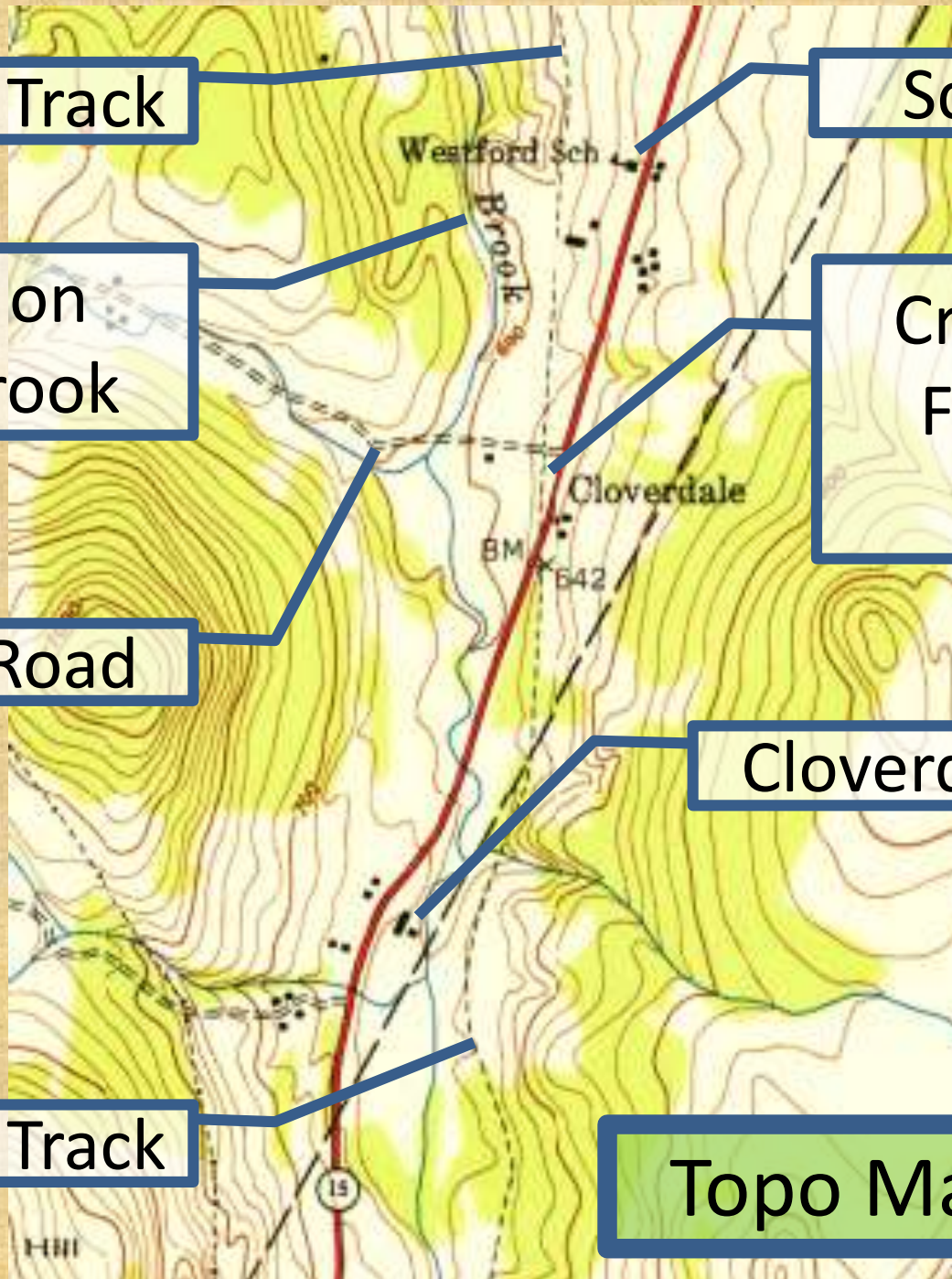
Creamery &
Freight RR
Station

Seymour Road

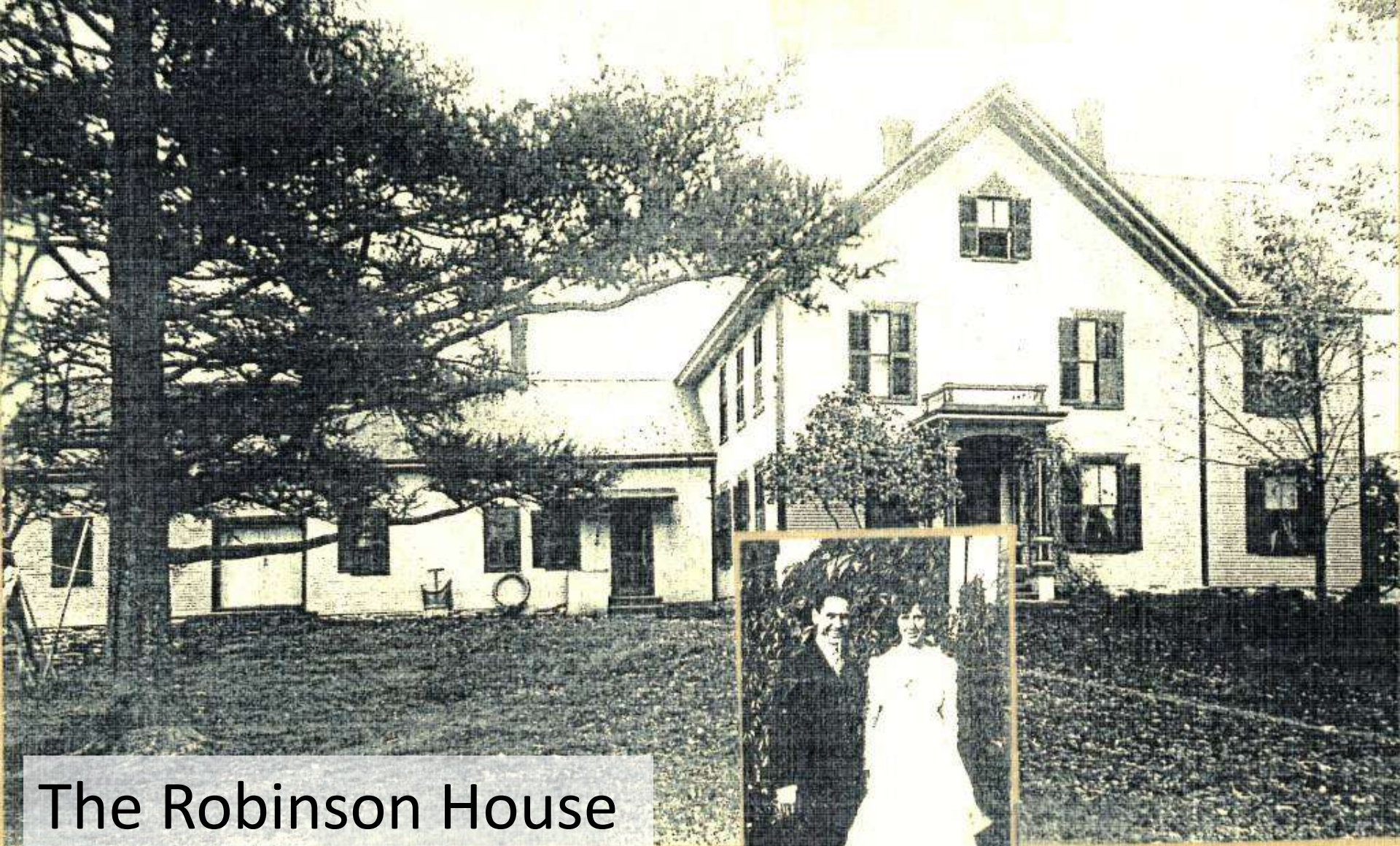
Cloverdale Farm

Former RR Track

Topo Map 1948



Two Weddings 1886 and 1911



The Robinson House
Fletcher Proctor and
Minnie Robinson





J. Kinsley &
Mabelle Putnam
December 25, 1911

Wayside Farm

Westview Farm

Putnam House at Wayside Farm c. 1900





Putnam House, 2004

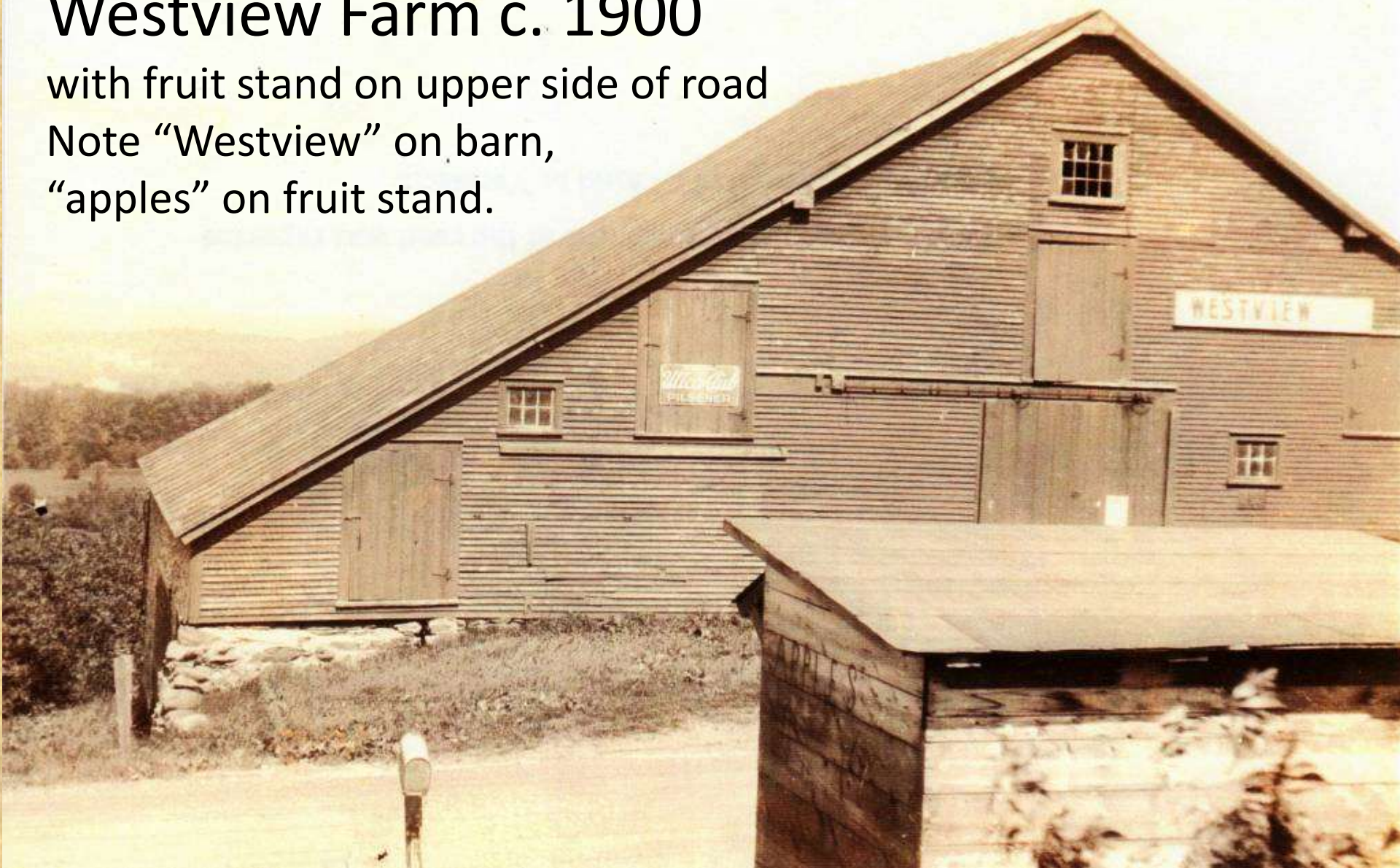
Five Sugarhouses on the Putnam Farm 1860s to 2017

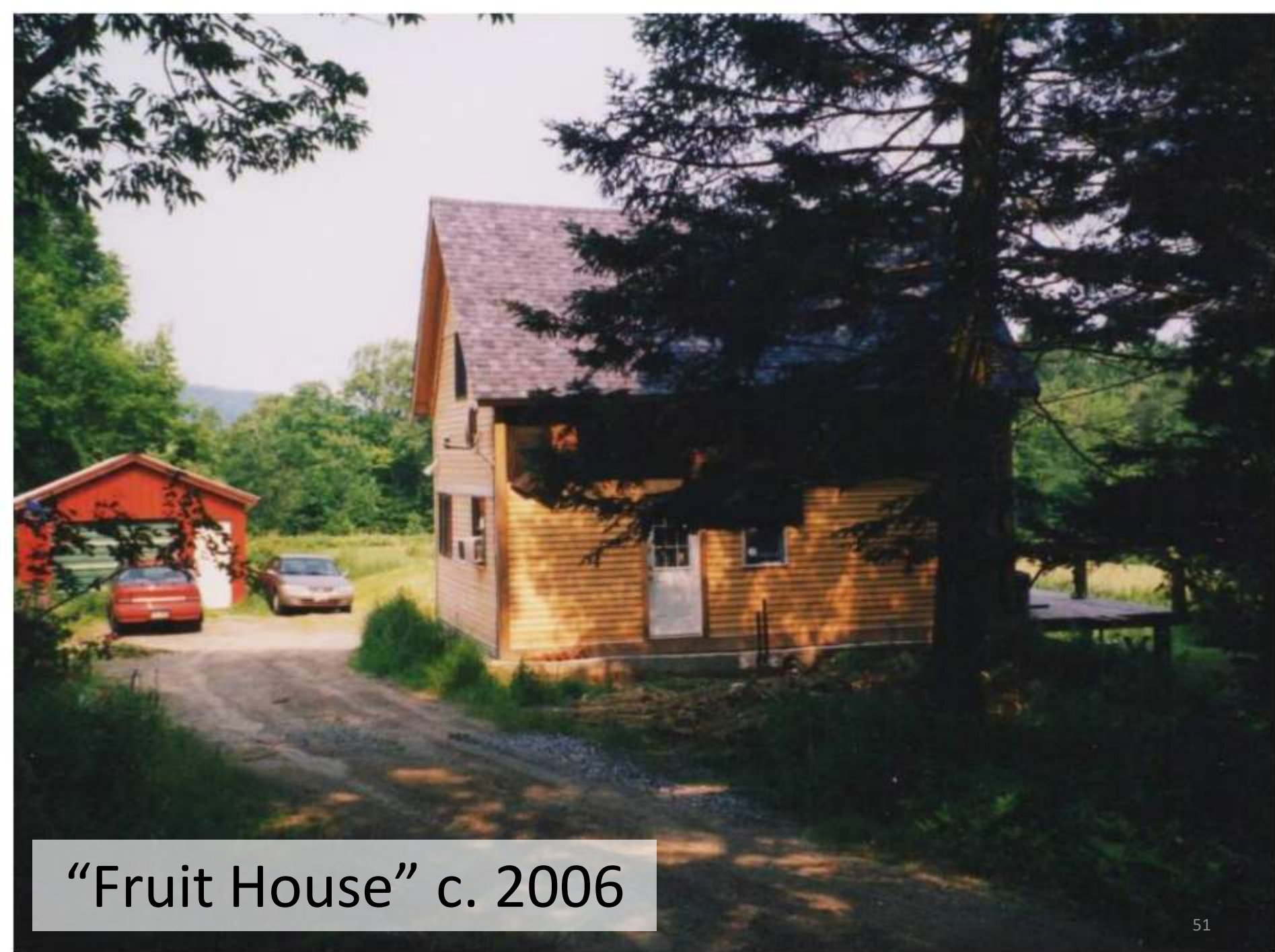


Westview Farm c. 1900

with fruit stand on upper side of road

Note "Westview" on barn,
"apples" on fruit stand.





“Fruit House” c. 2006



Westview Farm, 2008



Westview Farm, 2017



Huffman House at Westview Farm, 2017

A few pictures of the meeting of
the Vermont Horticultural Society
at Westview Farm in August, 1914.

Over 500 people attended.



Touring the orchards



At the "Fruit House"



At the farm house



The Westford town band



CLOVERDALE